

# Brownfields Project Update

*Updates and Upcoming Work*

Stephen McCord, MEI  
[Danielle Dolan, LGC]

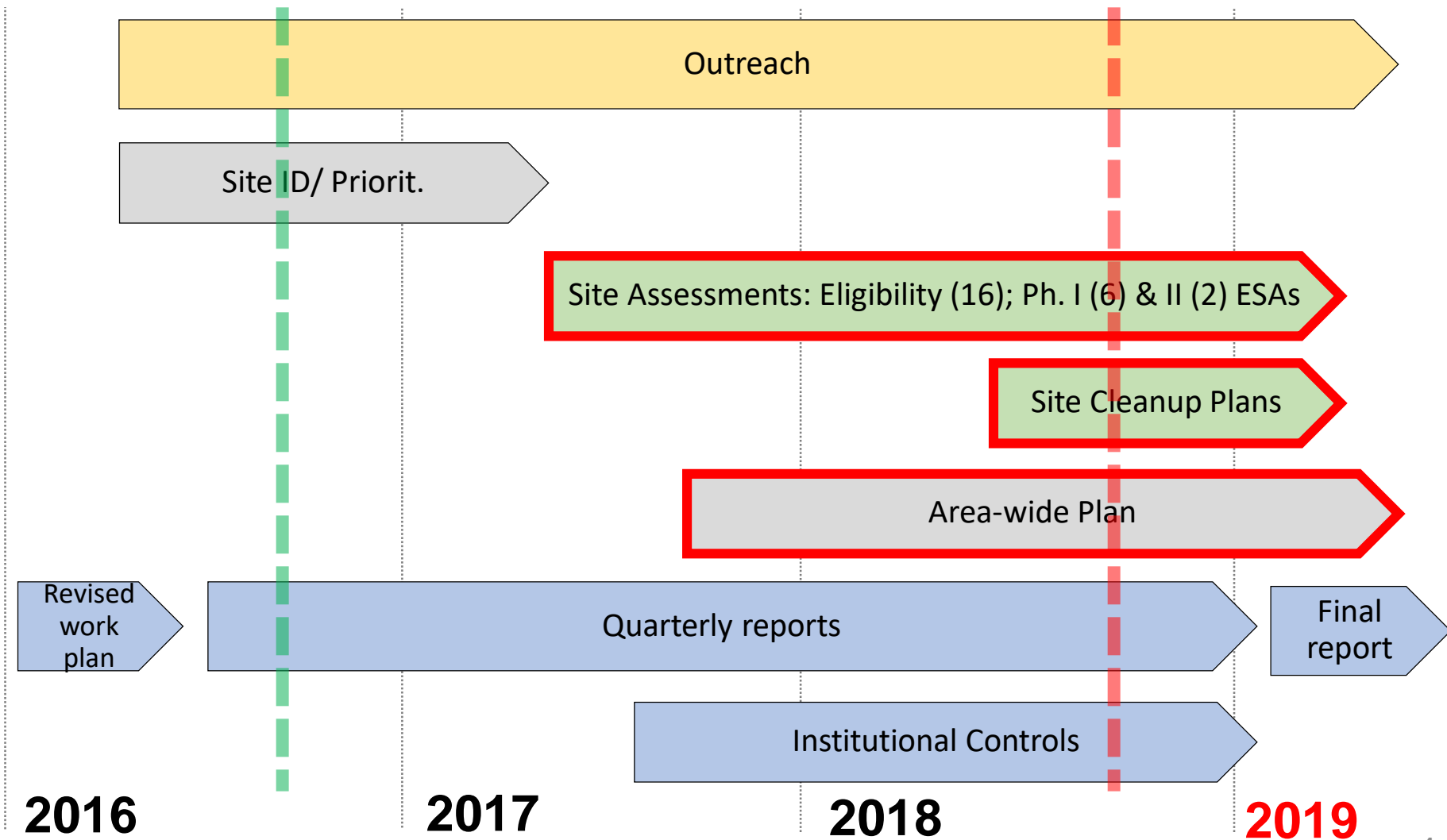
*Yolo WRA Tech. Com.*  
*4 October 2018*

# *What is a “Brownfield”?*

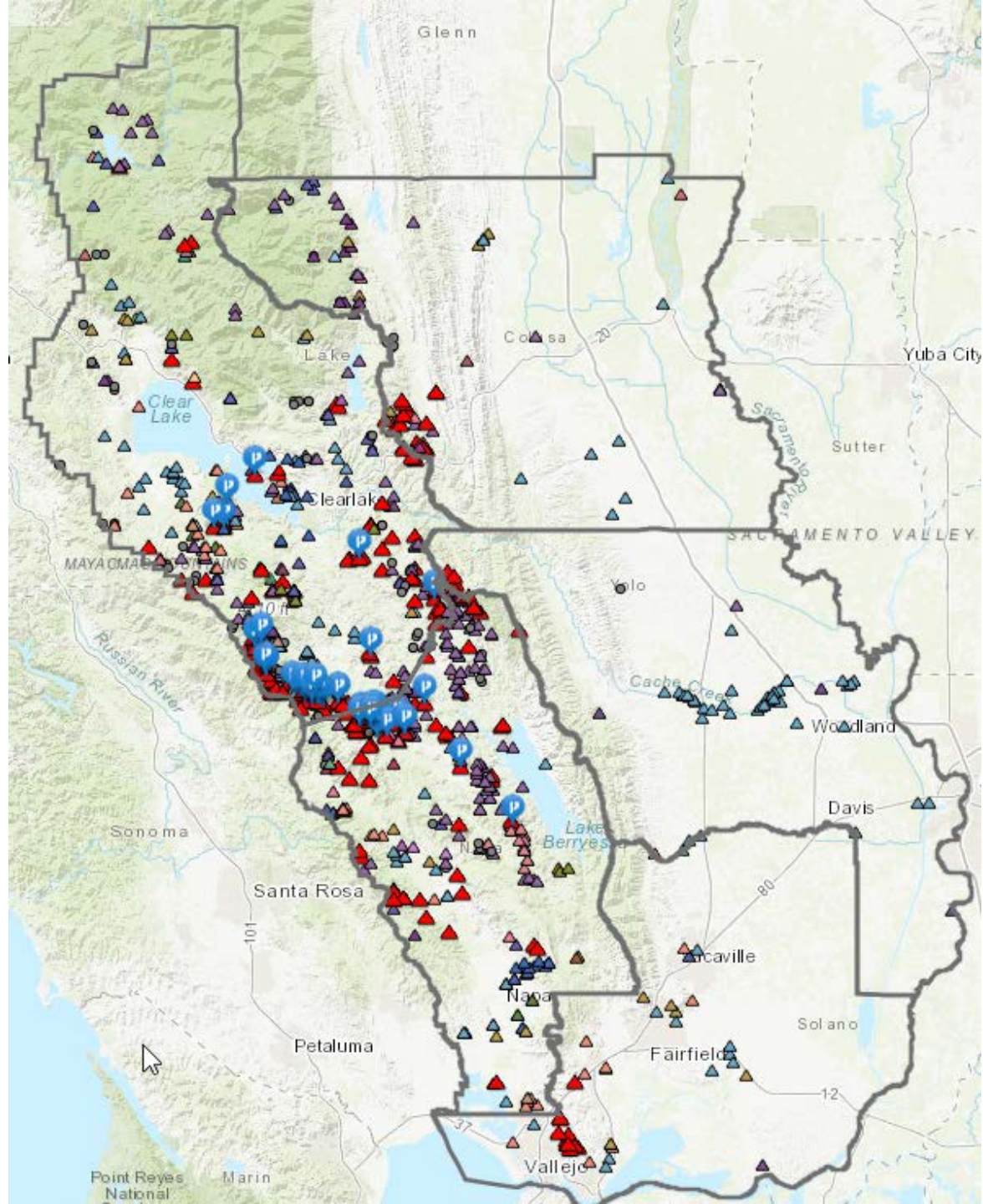
- “... real property, the expansion, redevelopment, or reuse of which may be complicated by the presence or potential presence of hazardous substances, pollutants, contaminants, controlled substances, petroleum or petroleum products, or is mine-scarred land.”
- Liability protection, funds & technical assistance (not enforcement) to assess and clean up sites [US EPA Brownfields Program]

Small Business Liability Relief and Brownfields Revitalization Act (Jan. 2002);  
2018 BUILD Act

- Participation / access is voluntary
- Assessments are free
- Assess now, cleanup next
- Results are public (but not publicized)



# Mines Upstream of Yolo County

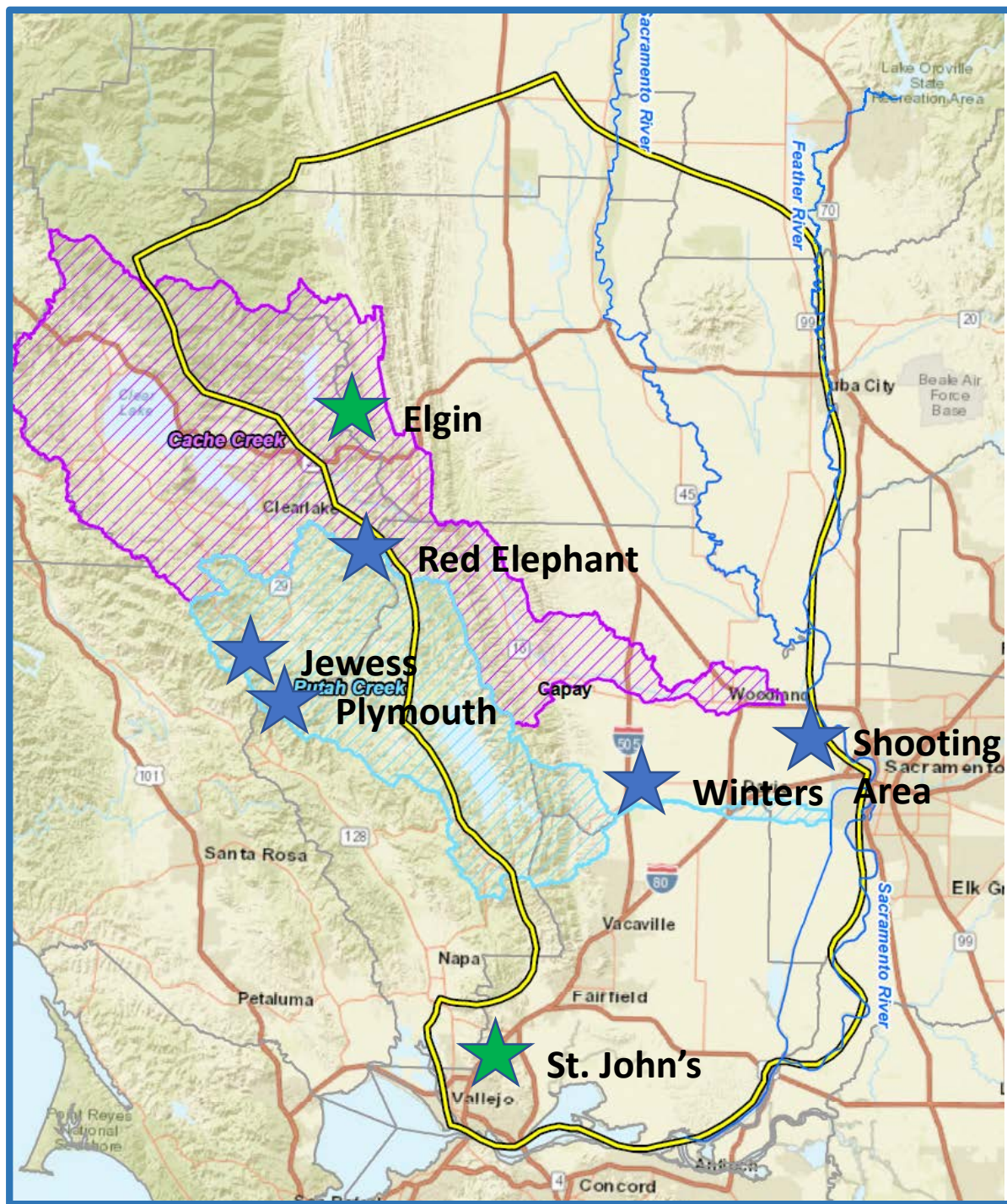


- Completed 1<sup>st</sup> Phase II ESA (Plymouth Mine)
- Completed 5<sup>th</sup> Phase I/ 2<sup>nd</sup> II ESA (Willow Slough Bypass illicit shooting area)





# *Project Sites Assessed(ing)*



## *Upcoming Activities*

- Cleanup Plan for **Elgin Mine**
- Sampling & Phase II ESA for **St. John's Mine**
- Discuss Phase II ESA options for **Winters WWTP**
- Outreach re. Area-Wide Plan



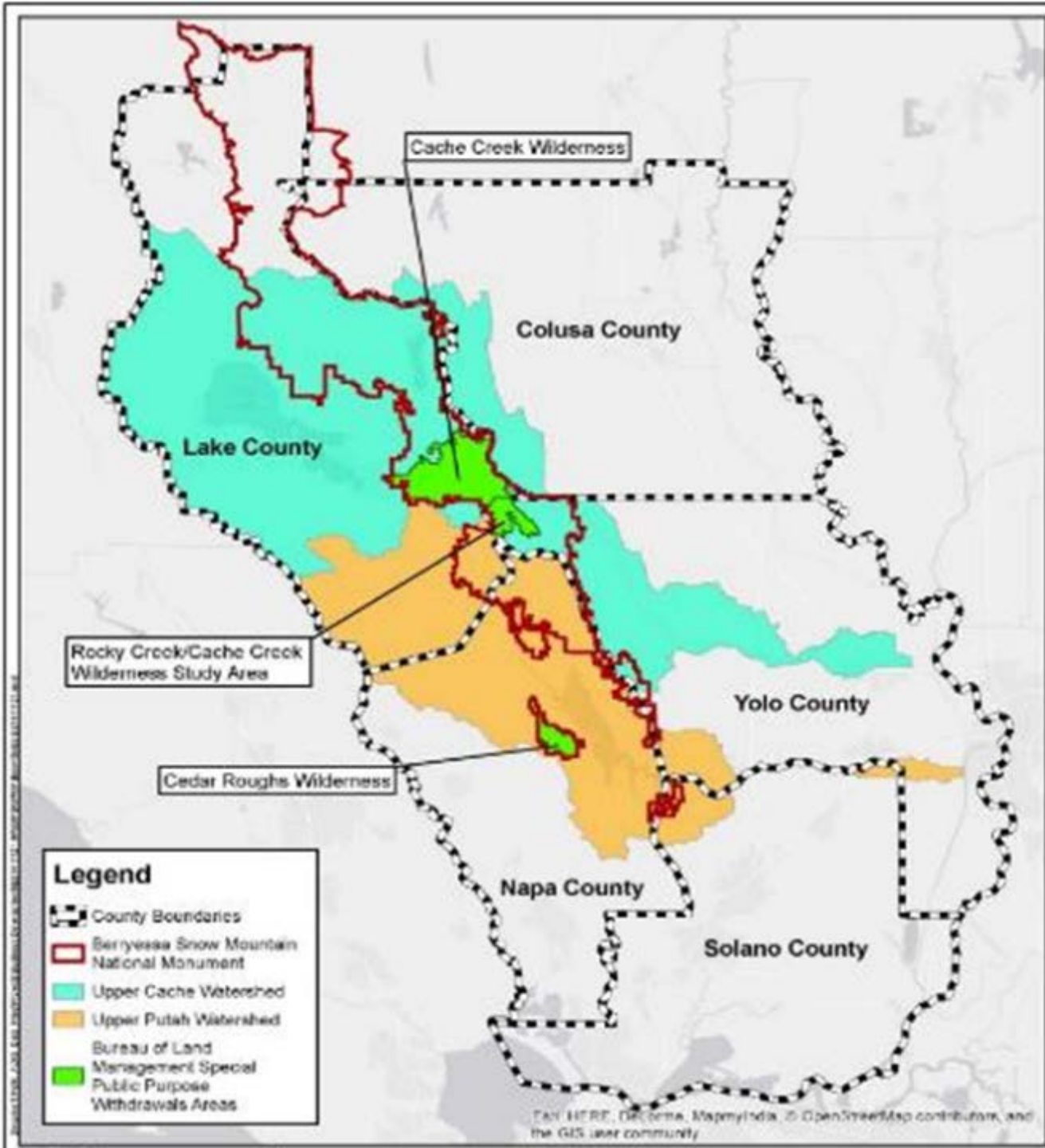


# *Area-Wide Plan Cleanup Objectives*

- Protect public health & environment
- Support local economy
- Reflect community's vision



# Regional Context





# *Recognize rich mining history*

## HISTORIC AETNA MINING DISTRICT

This intersection of the Phoenix Mining claim, patented November 15, 1861 and the Washington Mining claim, patented December 20, 1862 once was inhabited by a community of several hundred people and gave the appearance of a small town.

The headquarters consisted of several bunkhouses, horse stables, cookhouse, dining hall, blacksmith shop, the Washington Mine store and many other buildings. It served as a stagecoach stop on the 12 mile wagon trail from here to Calistoga.

The Phoenix Mine was the first quicksilver mine in Napa County and was accidentally discovered by a deer hunter, John Newman, who found traces of cinnabar after a fire in these hills. The mine was named after the legendary Phoenix bird which rose from the ashes. In its heyday the Phoenix Mining Company produced 60 flasks of quicksilver per week and employed 45 men, many of whom were Chinese laborers.



Dedicated on July 17, 2010  
By Grand Parlor  
Native Sons of the Golden West  
James L. Shadle, Grand President



2010-02

# *Primary Challenges*

- Site access / cooperative landowners
- Other priorities (drought/flooding, fires)
- Diffuse contamination
- Multiple jurisdictions & owners





- Lots of potential funding
- Fire clears the way
- Broad interest among government staff, districts, regulators
- Capable agency staff & contractors

## *Upcoming Meetings*

- ✓ Yolo WRA Tech. Com. – today
- Napa Co. Watershed Info. & Conservation Council (WICC) – Nov. 15, 2018
- Lake Co. Planning & Public Works – Jan. 10, 2019
- Middletown Area Town Hall (MATH) – Jan. 10, 2019
- City of Vallejo ?
- Colusa Co. Supervisors or RCD ?

## *Other Relevant Updates*

- **Yocha Dehe** – Presenting project options to Council in November
- **Statewide reservoirs Hg control program** – Workgroup meetings
- **Corona & Twin Peaks** – Last year to go
- **Cache Creek Settling Basin** – Studies continue
- **BLM mine site assessments & cleanups** – Ongoing
- **Napa County Measure A** – Oat Hill Rd. project

# For more information

Stephen McCord

McCord Environmental, Inc.

[sam@mccenv.com](mailto:sam@mccenv.com)

530-220-3165

[www.mccenv.com](http://www.mccenv.com)

Danielle Dolan

Local Gov't. Comm.

[ddolan@lgc.org](mailto:ddolan@lgc.org)

916-448-1198

[www.lgc.org](http://www.lgc.org)