



Brownfields Assessment Project

A voluntary program to address
our legacy problem

Stephen McCord





What is a “Brownfield”?

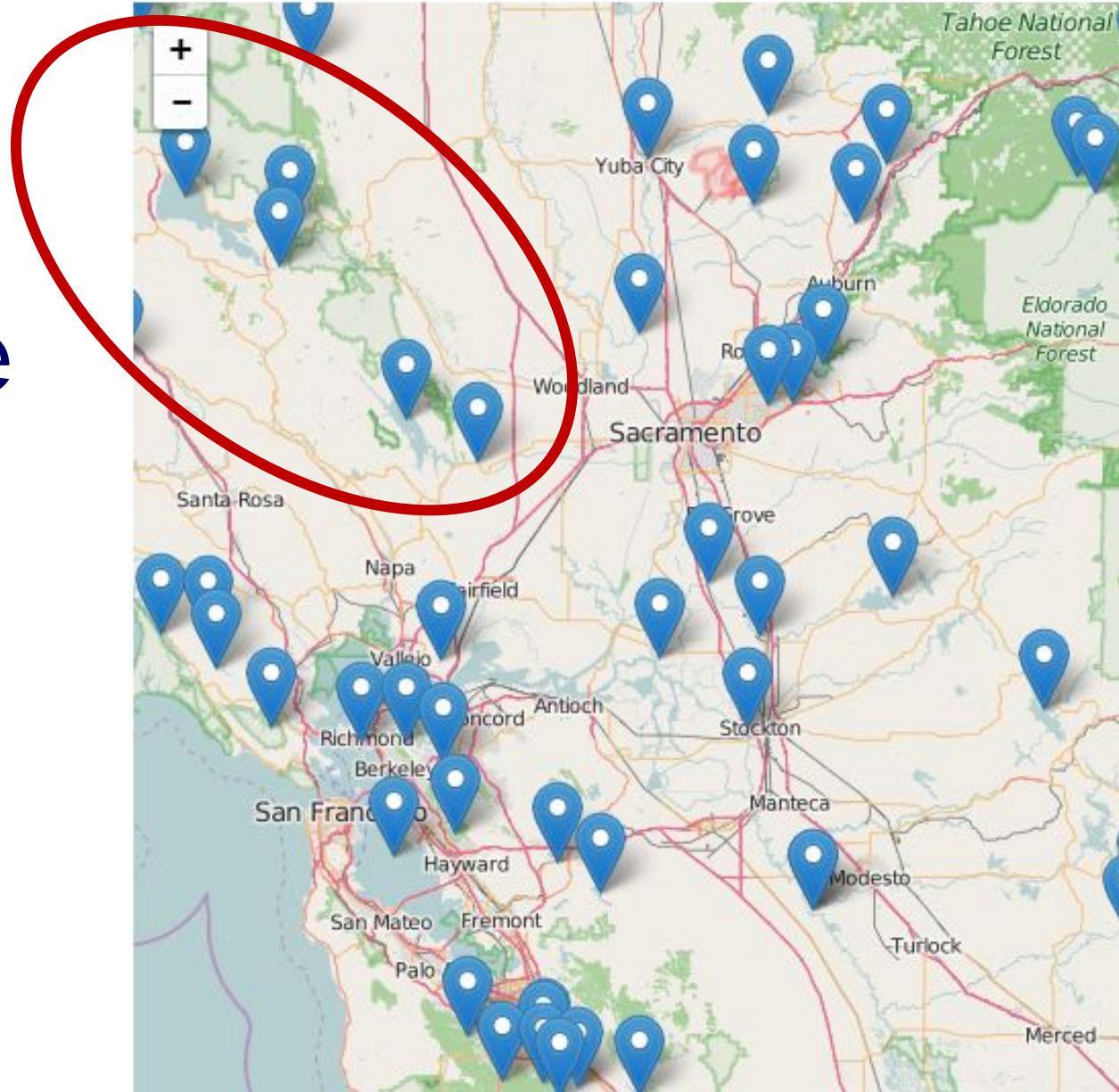
- “... **real property**, the expansion, redevelopment, or reuse of which may be complicated by the presence or potential presence of hazardous substances, pollutants, **contaminants**, controlled substances, petroleum or petroleum products, or is **mine-scarred land**.”
- Liability protection, funds & technical assistance (not enforcement) to assess and clean up sites [US EPA Brownfields Program]

Small Business Liability Relief and Brownfields Revitalization Act (Jan. 2002)

OEHHA Fish Advisory Map

Fish
Advisories
Everywhere

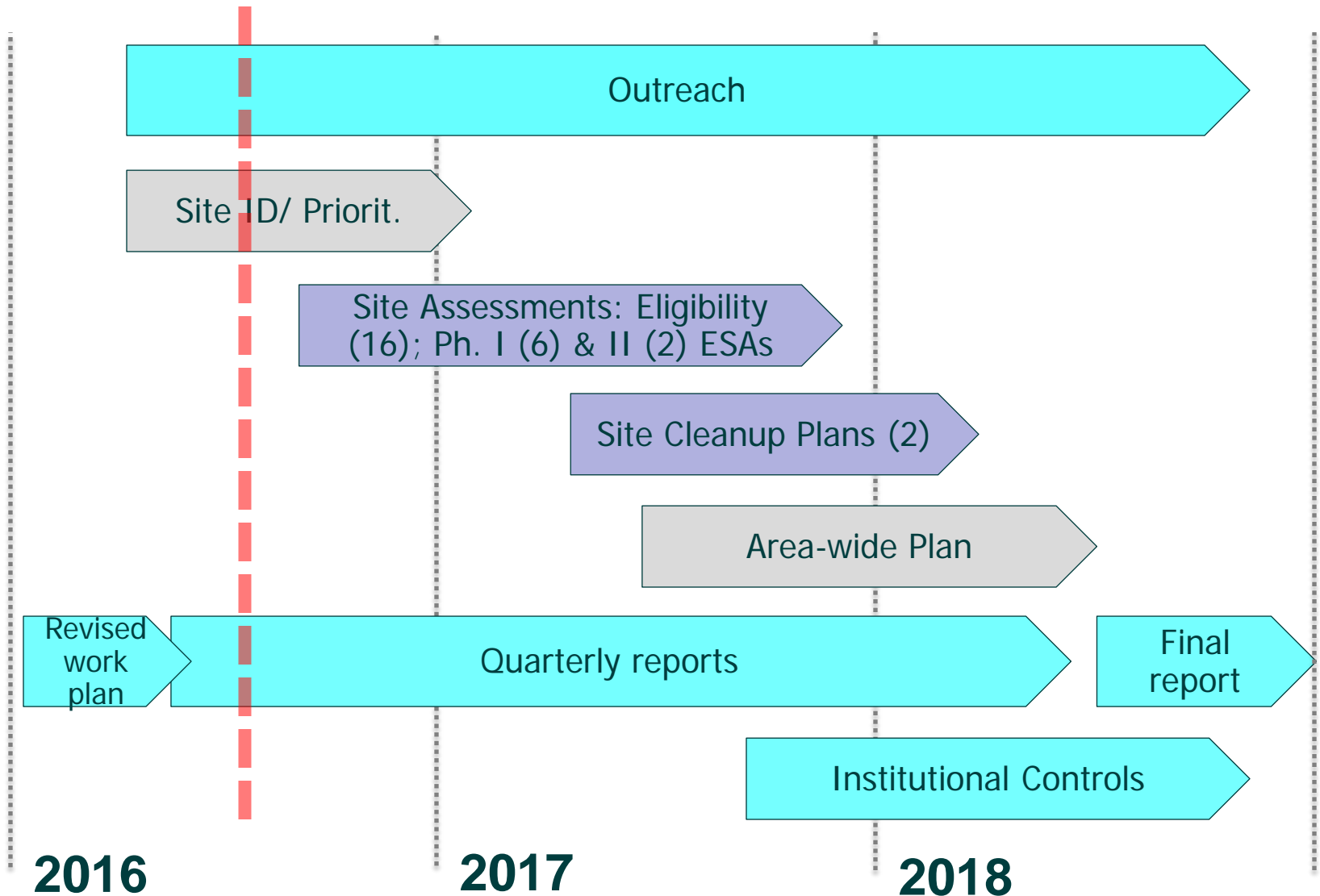
Advisory Map



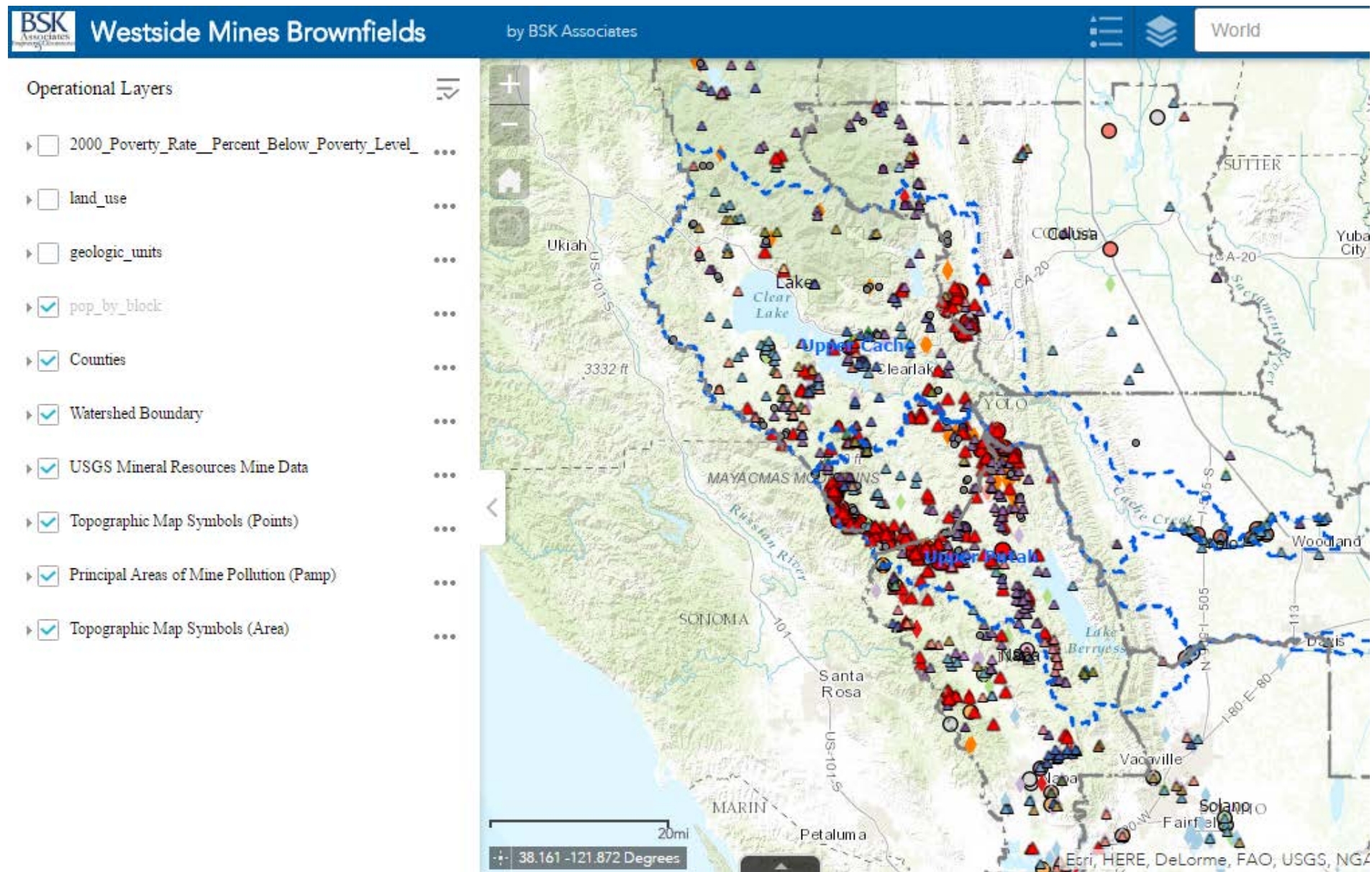
Project Org Chart



Overall Project Schedule



Mines – Current Inventory





Site Eligibility

✗ Listed or proposed Superfund sites;

✗ Subject court orders/ decrees under CERCLA;

✗ Controlled by US government*

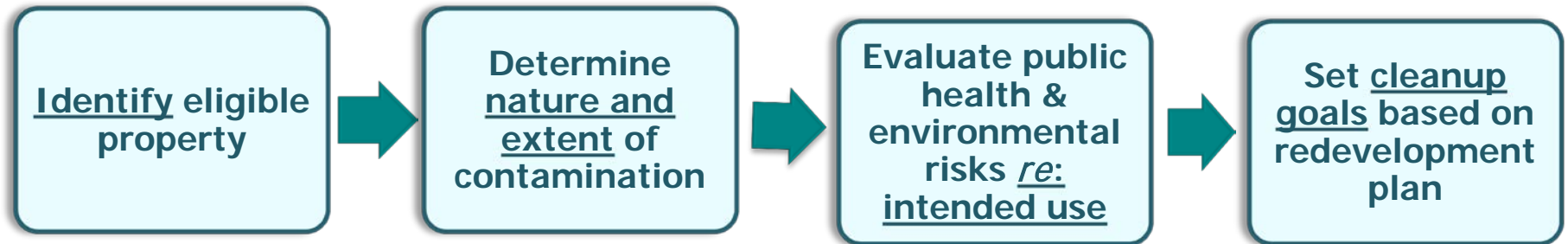
✓ Private land (to be transferred)

✓ Tribal land

✓ State/local gov't land

* Unless held in trust for an Indian Tribe

Assessment Process

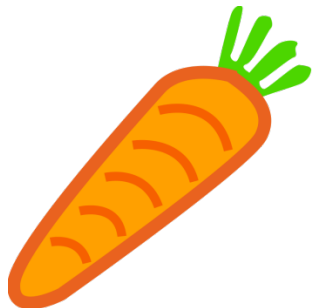


Future project(s):

1. Transfer parcel to public ownership
2. Implement the remedy & reuse plan

Key Points

- Assess now, cleanup next
- Need local knowledge / contacts
- Participation / access is voluntary
- Assessments are free
- Results are public (but not publicized)



Related Activities

- Corona & Twin Peaks Mines Project
- BLM mine site assessments & cleanups
- Napa County Measure A – Berryessa Watershed projects
- Statewide Reservoirs Mercury TMDL
- Cache Creek Settling Basin studies
- Caltrans support





Ways to Participate

- Visit website
(www.westsideirwmbrownfields.org)
- Join listserv
- Complete initial survey
- Provide additional info. & referrals
- Participate in Coordinating Committee
- Help ID and prioritize sites
- Present to WRA Board?

What Are Your Priorities?

- Public health risk/hazard
- Economic development opportunity
- Environmental impact/threat
- Others?



For more information

Stephen McCord
McCord Environmental, Inc.
sam@mccenv.com
530-220-3165
www.mccenv.com

Danielle Dolan
Local Gov't. Comm.
ddolan@lgc.org
916-448-1198
www.lgc.org